



A World Leader  
**100% Made in Australia**

**TRONICS®**  
An Aldus Company

# CUSTOMISED LABELLING SOLUTIONS

*To Meet Your Needs*

## **Engineering Reliability & Performance**

Made for high availability, repeatability, speed, volume, format flexibility, quick changeovers and robust longevity.

Production teams will achieve accuracy, consistency and minimal downtime or zero downtime (optional extra).

## **Servicing Australia, New Zealand & the USA**

Have confidence in your machines & receive timely service.

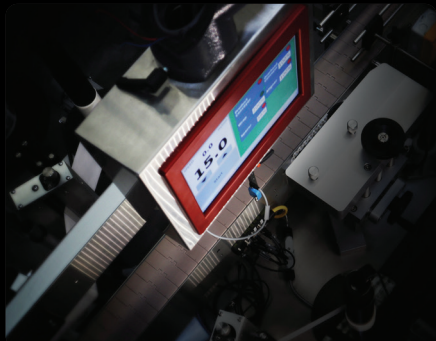
## **Friendly Customer Service**

Understanding and support of the requirements to achieve production goals & improvements.

Project Consultants  
Comprehensive Service Agreements  
Complete Training Programs  
Online Ordering System

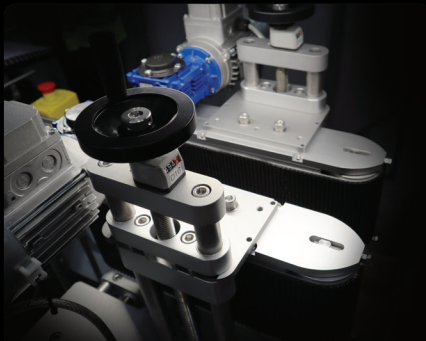
# TRONICS S4

## Customised Labelling Solutions



### TOUCH PANEL

On the fly adjustments are simple and instantaneous. Store up to 50 jobs. Operate up to 4 label heads.



### ADD OR REMOVE MODULES

- Bottle Separator
- Single Scroll (round bottles)
- Dual Scroll (oval bottle)
- Squaring Wheels



### QUICK PRECISE CHANGEOVERS

All components can be adjusted with ease and precision using dial gauges. Quick job changeovers and minimal down time.

Select components feature quick-release adjustments. No tools required.

### INDIVIDUAL MOTORS

Consistent, accurate label placement. All modules contain individual motors that are fully synchronised with the main product conveyor.

### LABELLING HEAD

- Adjustable brush assembly
- Adjustable web guides
- Delrin/stainless peel plate
- Clear label gap detection

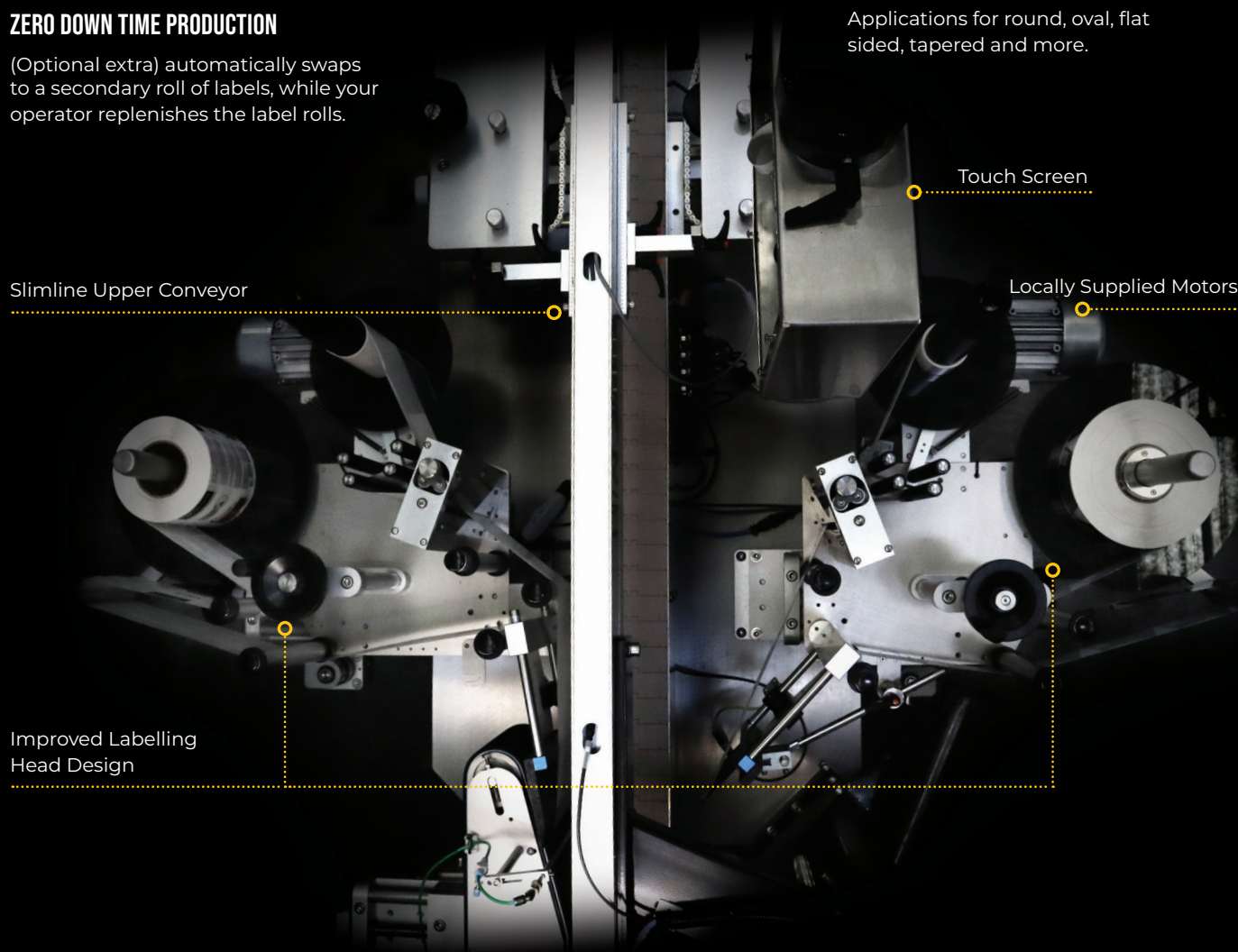
### FLEXIBILITY & CUSTOM SOLUTIONS

Produce a final product that shines, Tronics machines are made for your needs.

Applications for round, oval, flat sided, tapered and more.

### ZERO DOWN TIME PRODUCTION

(Optional extra) automatically swaps to a secondary roll of labels, while your operator replenishes the label rolls.



Label Specifications

Label Min Thickness: 80micron
Label Reel Core Size: 76mm Inside Diameter
Label Reel Outside Diameter: 330mm
Label Reel Outside Diameter Max: 500mm (opt)
Label Min Size: Vertical 15mm/Horizontal 20mm
Label Max Height: 110/210/260mm
Label Gap Min Size: 2.5mm

Labelling Head Specifications

Dispensing Speed Min: 5m/min
Dispensing Speed Min: 30m/min (std)
Dispensing Speed Max: 60m/min (opt)
Missing Label Detection (opt)
Low-Level Roll Detection (opt)
Clear Label Gap Sensor (opt)
Label Verification (opt)

Conveyor System

Speed: 6-30m/min
Conveyor Material: Plastic/Stainless/Belt/Roller
Widths: 114/190/254mm
Conveyor with Pucks (non-std)
Servo Drive (std)

Modules

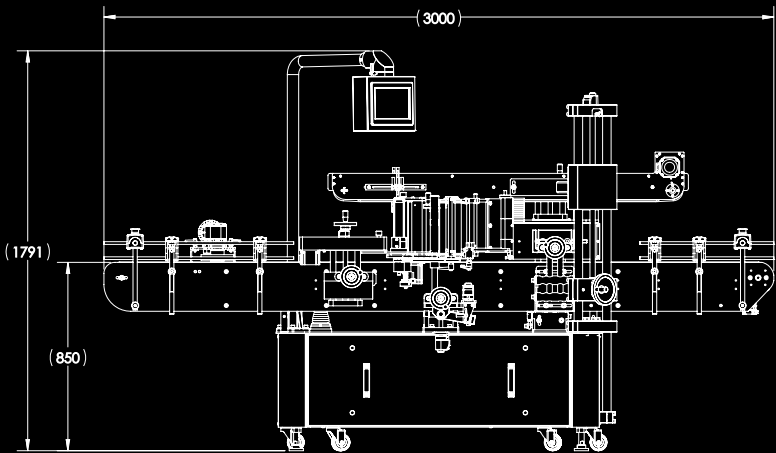
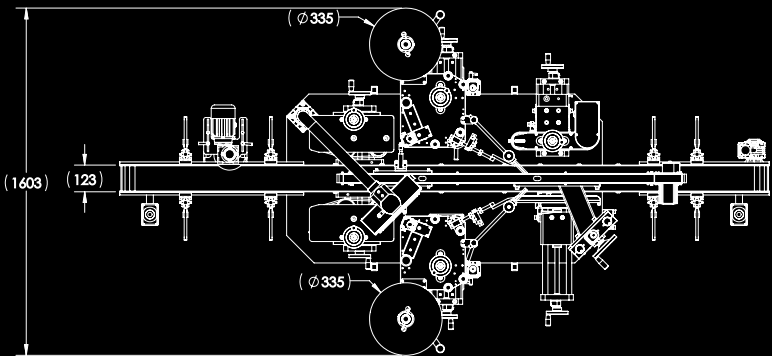
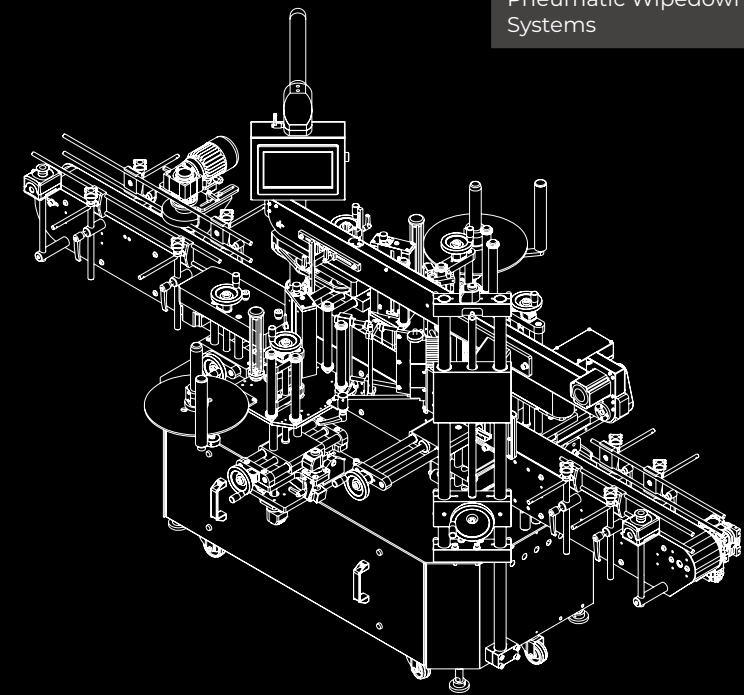
Wrap Module
Wrap Vacuum Module
Orientation System
Overhead Stabilising Conveyor
Single & Dual Scroll (High Speed Product Spacing) - Round and Oval Bottles
Aligner Chains
Squaring Wheels
Bottle Separator
Crash Gate System
Felt Wipes
Secondary Impression Rollers
Top and Bottom Label Placements

Job Memory

50 Jobs
---------

Other Options

Warning Beacon
TTO/Printer or Laser
Pneumatic Wipedown Systems





**TRONICS®**

An Aldus Company

[tronics.co.nz](http://tronics.co.nz)

**+64 9 588 4072**

**[sales@tronics.co.nz](mailto:sales@tronics.co.nz)**

**Address**

Unit 3 23-25 Highbrook Drive, East Tāmaki,  
Auckland 2013, New Zealand